



WALLACEA
DIVE CRUISES

ABOUT US

WHY CHOOSE US

- Over 20 years of experience: diving and cruising Indonesia since 2002
- Family owned, operated, managed, and marketed by our own company
- French-Indonesian company with high standards of service and safety
- Great 24/7 support and assistance pre, throughout and post trip
- Diver-focused and photographer-friendly facilities
- Experienced dive guides who are passionate about the marine life and really good spotters for those desirable photo objects that you came for, no matter how small

WHAT WE OFFER

- 2 dive liveaboards: MV Ambai (left picture) & MSY Seahorse (right picture)
- 1 dive lodge in Central Sulawesi: Tompotika Dive Lodge



OUR LIVEBOARDS



WHY CHOOSE OUR LIVEBOARDS

- Free Nitrox on all trips
- Great attention to details
- 1 dive guide for 4 divers max
- Optimal diving experience for photographers & non-photographers alike
- Well-thought through itineraries for optimal diving experience in each destination
- Experienced dive guides who are really good at finding photo objects, no matter how small!
- Comfortable boats featuring spacious ensuite cabins (all with air conditioners and hot water) and lounges
- Beers, wines and spirits, fresh juices, tea, coffee and soft drinks available onboard
- Great overall value for money with high standards of comfort & services
- Delicious Indonesian-Western meals served family style

MV AMBAI

QUICK OVERVIEW

- Starting Price: 408€/night
- Trip Lengths: 9-14 nights
- 8 comfortable cabins, 16 divers capacity, 18 crew members
- Ironwood boat - 32m x 7.5m custom-built for diving in 2012 for smooth navigation
- Destinations: Banda sea, Forgotten islands, Halmahera, Raja ampat, Ring of fire, Sulawesi, Triton bay
- Style & Design: Custom-built for diving with focus on spaciousness and convenience for diving activities
- Suitable for: Avid divers, UW photographers & videographers, dive pros
- 3 fiberglass dinghies
- 3-4 dives/day





THE CABINS

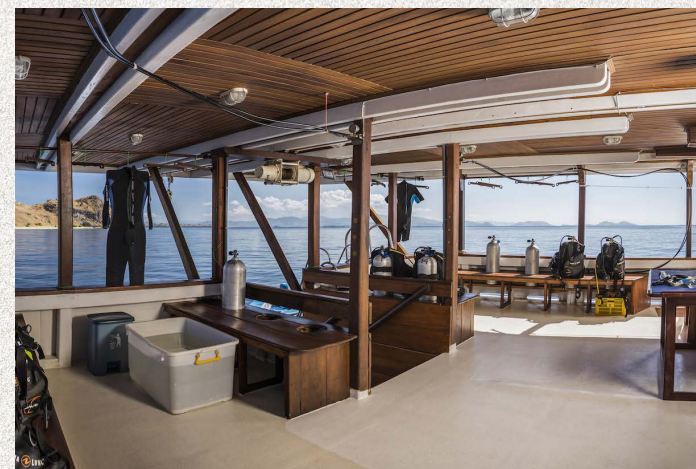
- 2 x sea view cabins with double bed (upper deck 10 m2)
- 4 x cabins with double bed + a single bunk bed (double/ twin bed, lower deck 12 m2)
- 2 x cabins with twin bunk beds (lower deck, 10 m2)
- Each cabin is equipped with individually-controlled air-conditioning
- Each cabin has a private bathroom with hot shower and ample storage for personal belongings
- Every bathroom has a separate toilet and shower, with ample water pressure for everyone!



THE RESTAURANT

- The air-conditioned restaurant on the main deck also serves as the place to brief divers before each dive
- There is a TV in the middle of the room
- The restaurant includes a bar
- We offer delicious Indonesian-Western meals served family style
- We can adjust any specific dietary





THE LOUNGES

- 2 outdoor lounges: on the main deck and on the upper deck
- MV Ambai is designed to make guests comfortable during long trips
- There are plenty of space where guests can mingle and socialize
- under the shade, but also enough space for them to relax on their
- own to read their books or take a nap outdoor
- There is a smoking area at the back of the upper deck where guests can also get to know the crew

DIVING RELATED AREAS

- The dive deck is spacious and connects directly to the dive platform that can receive all of our 3 dinghies at the same time
- Right to the dive deck there is a camera room with many outlets and ample room for everyone
- Massage, Kayaks, paddle board and waterski

MSY SEAHORSE

QUICK OVERVIEW

- Starting Price: 408€/night
- Trip Lengths: 9-14 nights
- 8 comfortable cabins, 16 divers capacity, 16 crew members
- Beautiful 33 m x 8.5 m phinisi built in 2004 and refurbished in 2018
- Destinations: Alor, Bali, Banda sea, Forgotten islands, Komodo, Halmahera, Raja ampat, Ring of fire, Sulawesi, Triton bay, Wakatobi
- Style & Design: Beautiful wooden sailing boat refitted for diving and leisure
- Suitable for: Avid divers, UW photographers & videographers, dive pros
- 2 aluminium dinghies
- 3-4 dives/day





THE CABINS

- 2 x cabins with double bed "Sea view" (13.5 sqm)
- 1 x cabin with a double bed lower deck (12 sqm)
- 5 x cabins with twin beds lower deck (12 sqm)
- Storage for personal belongings
- Each cabin is equipped with individually-controlled air-conditioning
- Each cabin has a private bathroom with hot shower and ample water pressure for everyone!



THE RESTAURANT

- Spacious air-conditioned restaurant on the main deck with meals served on the table, family style
- There is a TV in the room
- The restaurant includes a bar
- We offer delicious Indonesian-Western meals and snacks
- We can adjust any specific dietary





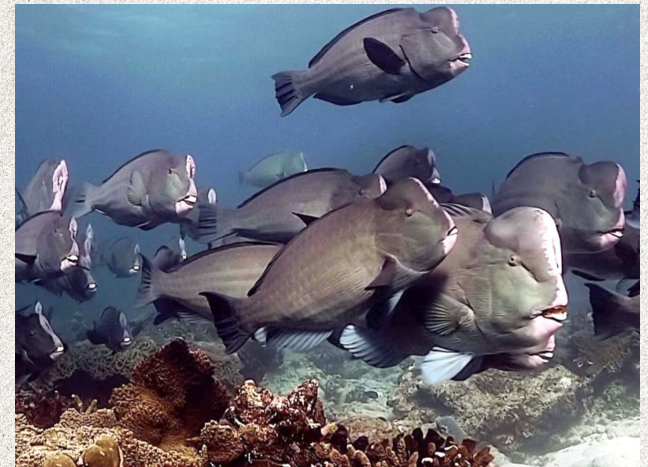
THE LOUNGE

- MSY SEAHORSE is designed to make guests comfortable during long trips
- Spacious lounge on the upper deck with plenty of space where guests can mingle under the shade, but also enough space for them to relax on their own to read their books or take a nap outdoor
- There is a smoking area at the back of the upper deck where guests can also get to know the crew

DIVING RELATED AREAS

- Spacious dive deck with a big table in the middle and a large coach
- There is a large and bright camera room with many outlets and ample room for everyone
- 2 x 22-feet aluminium tender boats ensure easy and comfortable experience in and out of the water
- Massage, complimentary Kayaks and paddle board

OUR ITINERARIES



WE ARE CRUISING ALL AROUND INDONESIA

Alor, Bali, Banda sea, Forgotten islands, Komodo, Halmahera, Raja ampat, Ring of fire, Sulawesi, Triton bay, Wakatobi.



KALIMANTAN

Manado
Bitung

HALMAHERA
Ternate

Raja Ampat

Sorong

PAPUA

SULAWESI

☆ Tompotika
Luwuk

MOLUCCA SEA

SERAM SEA
Misool

SERAM

Kendari

Ambon

Kaimana

Triton Bay

Wangi Wangi

BANDA SEA

Ring of Fire

YAMDENA

Saumlaki

Komodo

BALI

Bali

SUMBAWA

Labuan Bajo

FLORES
Maumere

Alor

SUMBA

TIMOR



TOMPOTIKA DIVE LODGE

QUICK OVERVIEW

- **WHAT:** An intimate resort nestled in a small village, with a capacity of only 10 pax on the East coast of Central Sulawesi. It is the only dive operation in the area with an absolute tranquillity on the dive sites.
- **WHERE:** 2 hours and half from Luwuk airport, East coast of Central Sulawesi. Daily flights to Jakarta, Denpasar, Manado and Palu.
- **WHY:** Amazing fish life and biodiversity. Diverse dives sites from high voltage currents reef to quiet critters muck dives. The area is an official marine protected area managed by our association the Tompotika Foundation through a government partnership.
- **RATES:** Dive package starting at 180 €/ night including 2 dives/day





THE ACCOMMODATIONS

- 2 standard bungalows with double bed (35 sqm)
- 1 standard bungalow twin bed (35 sqm)
- 1 deluxe bungalows with double bed + 1 single bed (40 sqm)
- 1 bungalow with double bed + 2 single beds + 1 sofa (55 sqm)
- Each bungalow has its own air-conditioning, private bathroom with hot shower, mosquito net and sea view.



THE FACILITIES

- 3 Indonesian-Western fusion meals per day included in our accommodation packages. Served at our beachfront restaurant
- 220v electricity running 24/7
- Free WiFi for light apps such as WhatsApp
- On-site dive center with experienced dive guides (1 dive guide for 4 divers max)
- Access to a white-sand private beach





DIVING OVERVIEW

- Amazing muck dive site just in front of the lodge with black sand. Full of critters that Sulawesi is famous for: frogfish, ghost pipefish, mimic octopus, hairy crab, blue ring octopus, nudibranchs and so much more
- Most of the dive sites are ridges, seamounts, and bommies with abundant soft corals and amazing life
- Many schools of fish and pelagics: surgeons, trevallies, barracudas, tunas, reef sharks and occasionally eagle and manta rays

CONTACTS



Jérôme +62 812 44 94 20 28

Akim +62 812 39 33 22 24

Amelie +33 7 62 64 39 11

Mathias +1 310 746 8601

info@wallacea-divecruise.com

www.wallacea-divecruise.com